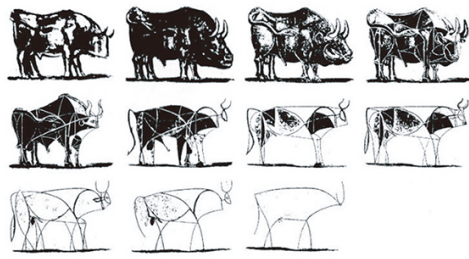


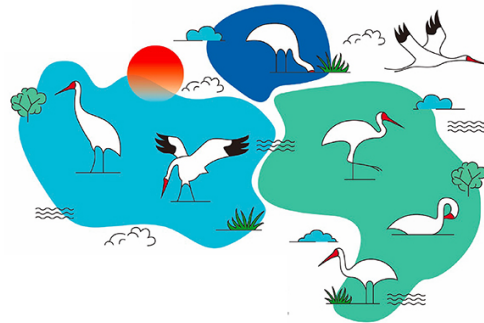
南昌高新
白鹤共生馆
SIBERIAN CRANE
SYMBIOSIS MUSEUM
NANCHANG



Siberian Crane, drawing inspiration from Picasso



Located along PoyangLake in Nanchang China, this museum exemplifies the harmonious coexistence between cranes and nature. The hall's design draws inspiration from two standing cranes, creatively capturing their resting and active postures. The exterior facade of the coexistence hall is crafted by overlapping outlines of the crane's abdomen and four-legged stance. A gracefully curved line descends from the crane's back, intersecting with the ground to form a symbolic perfect circle, representing Earth as our shared home. Within this dual habitat, humans and cranes coexist in perfect harmony. Category



A main visual created by combining local terrain features



Office supplies design



Poster Design



Posters for bus stop signs



The poster's performance in the conference room



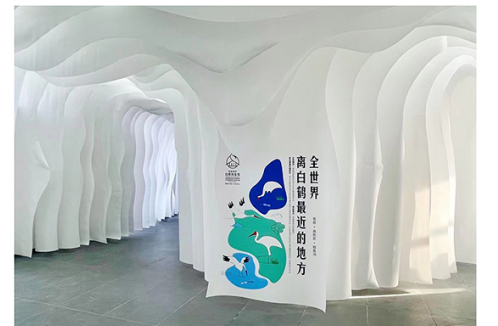
Main visual outdoor performance



Main visual outdoor performance



Exhibition Hall Scenery



Posters for bus stop signs